

**A1-TB-0059-060-02-B**  
 A1 2201037  
 B1 100V037

PROJECTION

THIS DRAWING CONFORMS TO A.S. 308

**DETAIL 'S'**  
 SCALE: 10/1  
 GEN TOL: ±0.1

**DETAIL 'K'**  
 SCALE: 10/1  
 (2 POS'N)  
 GEN TOL: ±0.1

POLYIMIDE COATING IS TO BE MASKED FROM THE UN-HATCHED REGIONS SHOWN. NOTE - PATTERN IS IDENTICAL ON BOTH SIDES

**MATERIAL:**  
 THERMAL PYROLYTIC GRAPHITE (TPG)  
 GRADES: (K I = 1700 W/m<sup>2</sup>·K)  
 (K I = 25 W/m<sup>2</sup>·K)  
 (SUPPLIER: ADVANCED CERAMICS CORPORATION  
 PO BOX 94924, CLEVELAND, OHIO, USA)

BOTH FACES ARE TO BE COVERED WITH 0.02 MM OF POLYIMIDE AS SHOWN WITH THE EXCEPTION OF THE UN-HATCHED REGIONS.

0.1 (WHEN COATED)  
 // 0.05 A (WHEN COATED)

ISSUE	DATE	NO.	BY	CHKD.	APRD.	ISSUED	STATUS
B	10/01/97						


TOLERANCES UNLESS STATED FINISHES: SEE DRAWING  
 GEN: ±0.4 REMOVE ALL BURRS DO NOT SCALE  
 MATERIAL & SPEC. SEE DRAWING SURFACE TEXTURE: μm 0 UNLESS STATED  
 USED ON: - (A) - 100-005 (TP-0059) © CIRCLEC 1997  
 THE CENTRAL LABORATORY OF THE RESISTOR DIVISION, MEMPHIS JUNCTION, TENN., ONLY ON O.C.

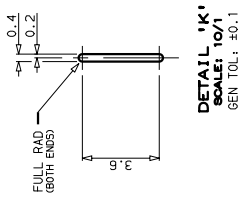
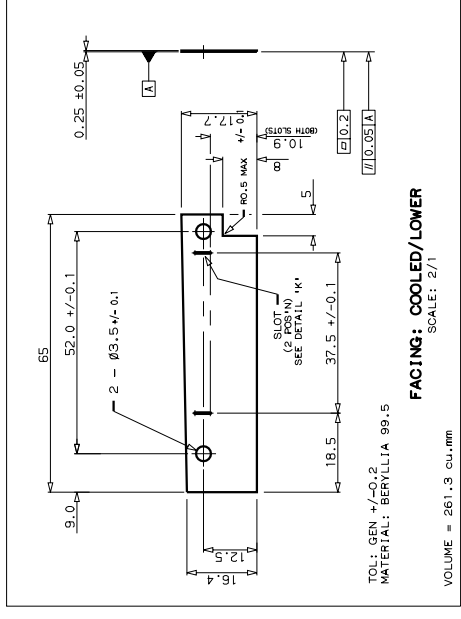
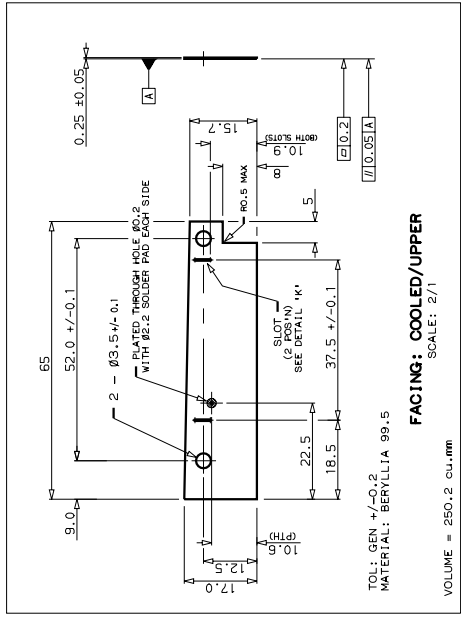
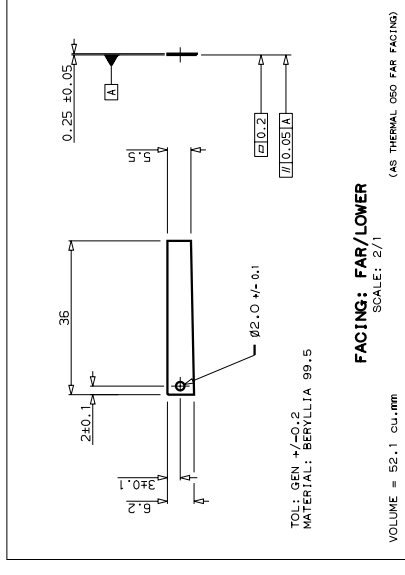
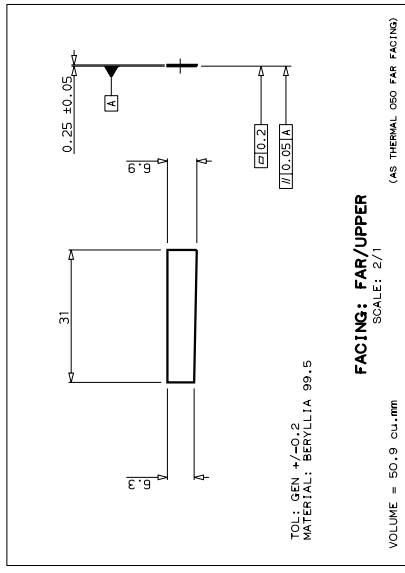
**BASEBOARD**  
 ELECTRICAL MODULE PROTOTYPE - V1.1

ALL DIMENSIONS ARE IN MM

**A1-TB-0059-060-02-B**  
 SHEET 2 OF 6

**A1-TB-0059-060-03-B**  
 A 220C197  
 B 1 10NOV97

PROJECTION  THIS DRAWING COMPARES TO B.5.308



ISSUE	DATE	MOD. NO.	D. APPROVAL	R. APPROVAL	G. APPROVAL	ISSUED
B	10NOV97	-	-	-	-	ISSUED

TOLERANCES UNLESS STATED: FINISHES SEE DRAWING ORIGINAL SCALE  
 GEN: ±0.4 REMOVE ALL BURRS DO NOT SCALE  
 MATERIAL & SPEC. SEE DRAWING SURFACE TEXTURE μm 0  
 STOCK UNLESS STATED  
 USED ON: (A) TD-503 (B) 505D © CCLARC 1997

**THE CENTRAL LABORATORY OF THE RESISTANT COUNCILS**  
 UNDERSTANDING APPLIED LABORATORY, GUILDFORD, GU10 0AA  
 TITLE  
 ATLAS INNER TRACKER  
 MODULE COMPONENTS  
 ELECTRICAL MODULE PROTOTYPE - V1.1  
 GEN

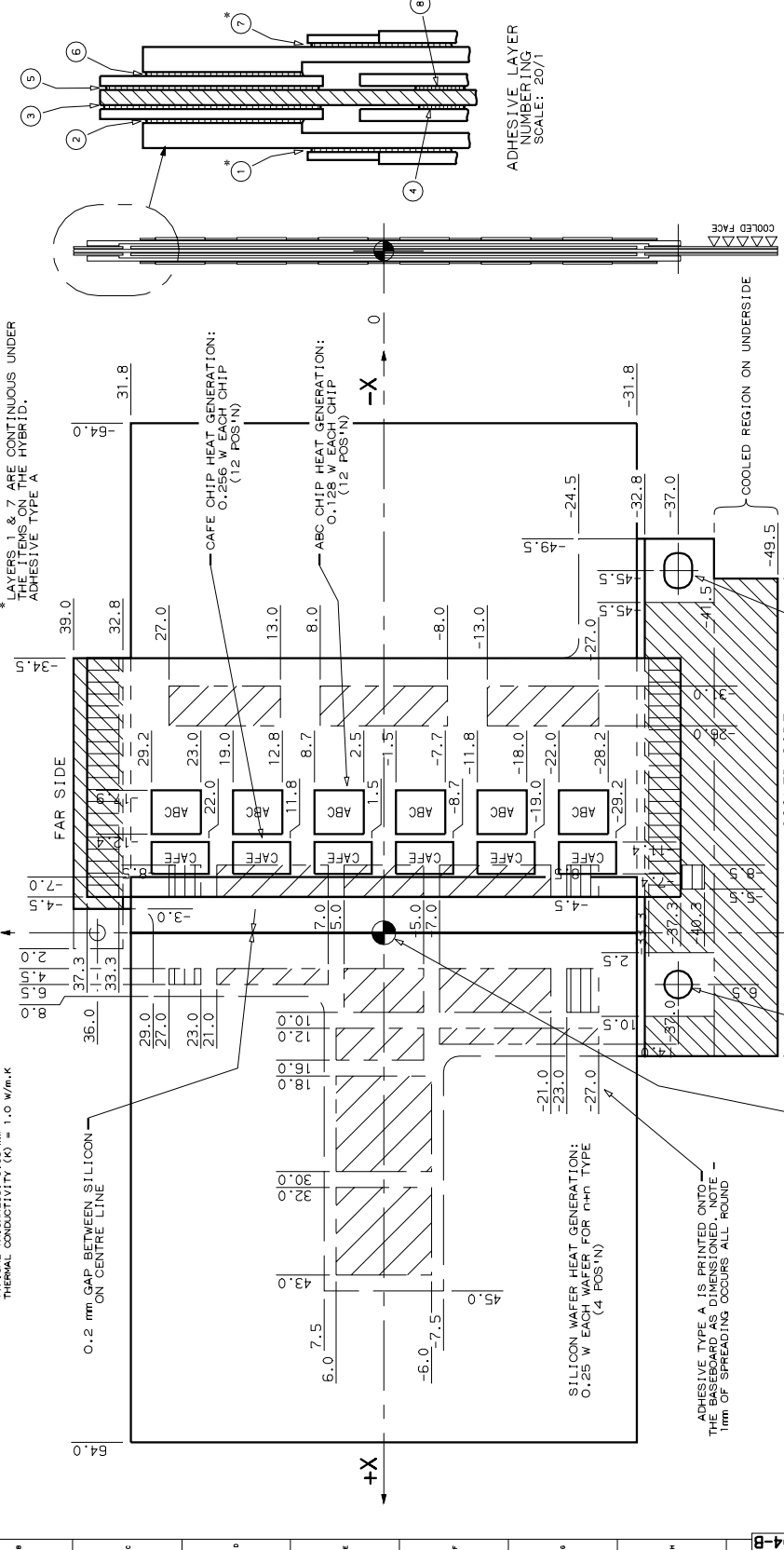
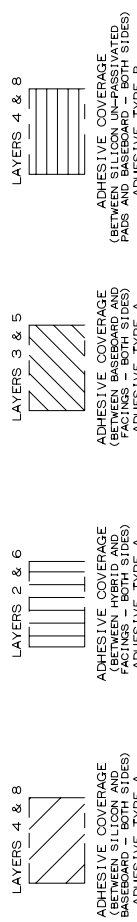
**A1-TB-0059-060-03-B**  
 SHEET 3 OF 6

ALL DIMENSIONS ARE MM

PROJECTION THIS DRAWING CONFORMS TO B.S.308

**ADHESIVE TYPE A:** 2011 THERMAL EPOXY ADHESIVE COATED WITH BERYL OXIDE FOR DETAILS SEE MGTBSON TYPICAL THICKNESS: 0.075 mm THERMAL CONDUCTIVITY (K) = 0.15 W/m.K

**ADHESIVE TYPE B:** ELECTRICALLY CONDUCTIVE SILICON ADHESIVE TYPICAL THICKNESS: 0.08 mm THERMAL CONDUCTIVITY (K) = 1.0 W/m.K

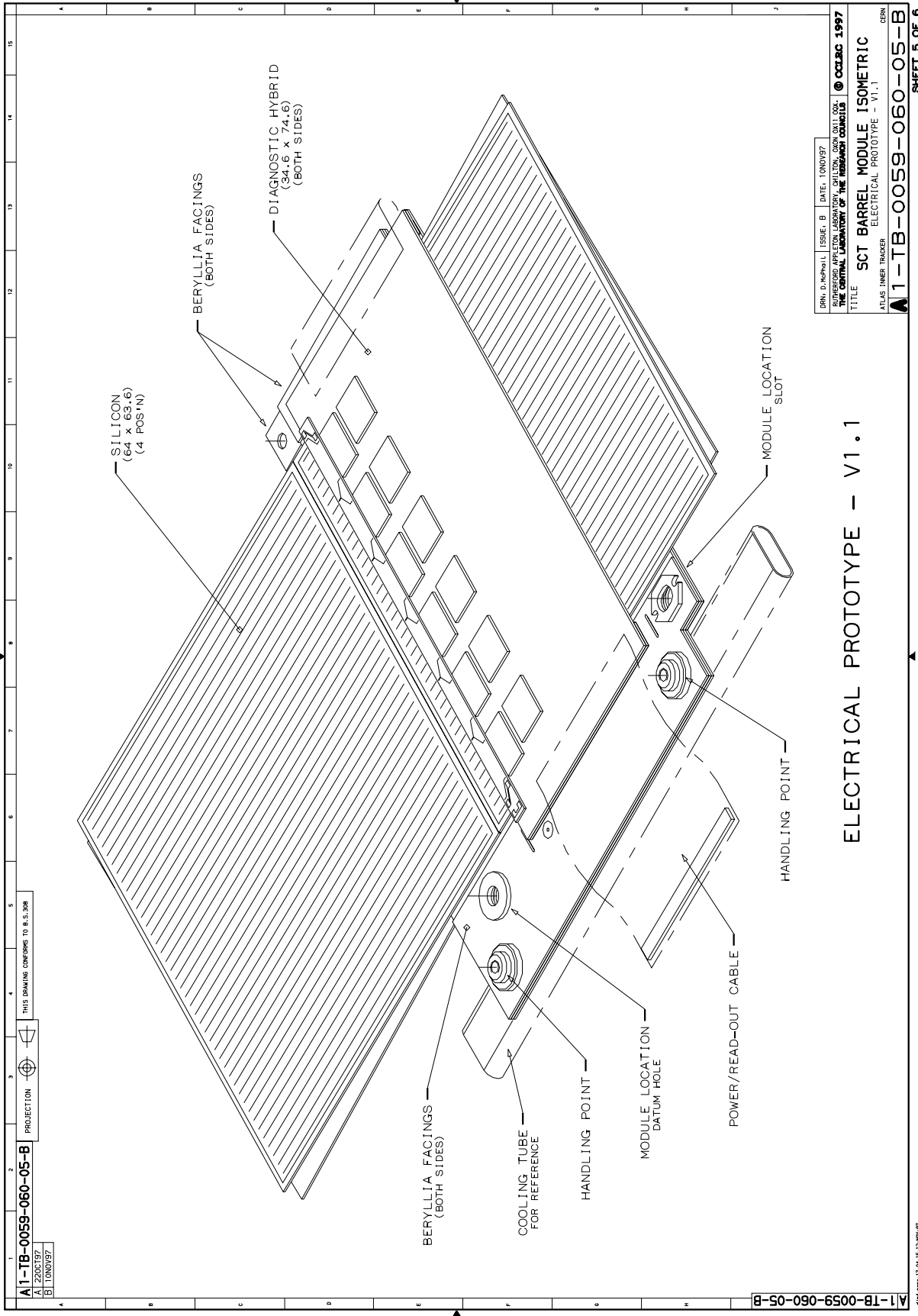


DRN: D. McPHAIL ISSUE: B DATE: 10/06/97  
 RUTHERFORD APPLIION LABORATORY, CHILTON, OXON OX11 0QJ  
 THE CENTRAL LABORATORY OF THE RESEARCH COUNCIL © OCCAS 1997

TITLE  
 ATLAS INNER TRACKER ELECTRICAL PROTOTYPE - VI.1

ADHESIVE AND FEA DETAILS  
 (SHOWN SIMPLIFIED)  
 SCALE: 4/1

SEE SHEET 1 FOR LAYER DETAILS  
 SEE SHEET 2 FOR BASEBOARD DETAIL  
 SEE SHEET 3 FOR FACING BOARD DETAILS



A1-TB-0059-060-05-B  
 A 2206187  
 B 10NOV97

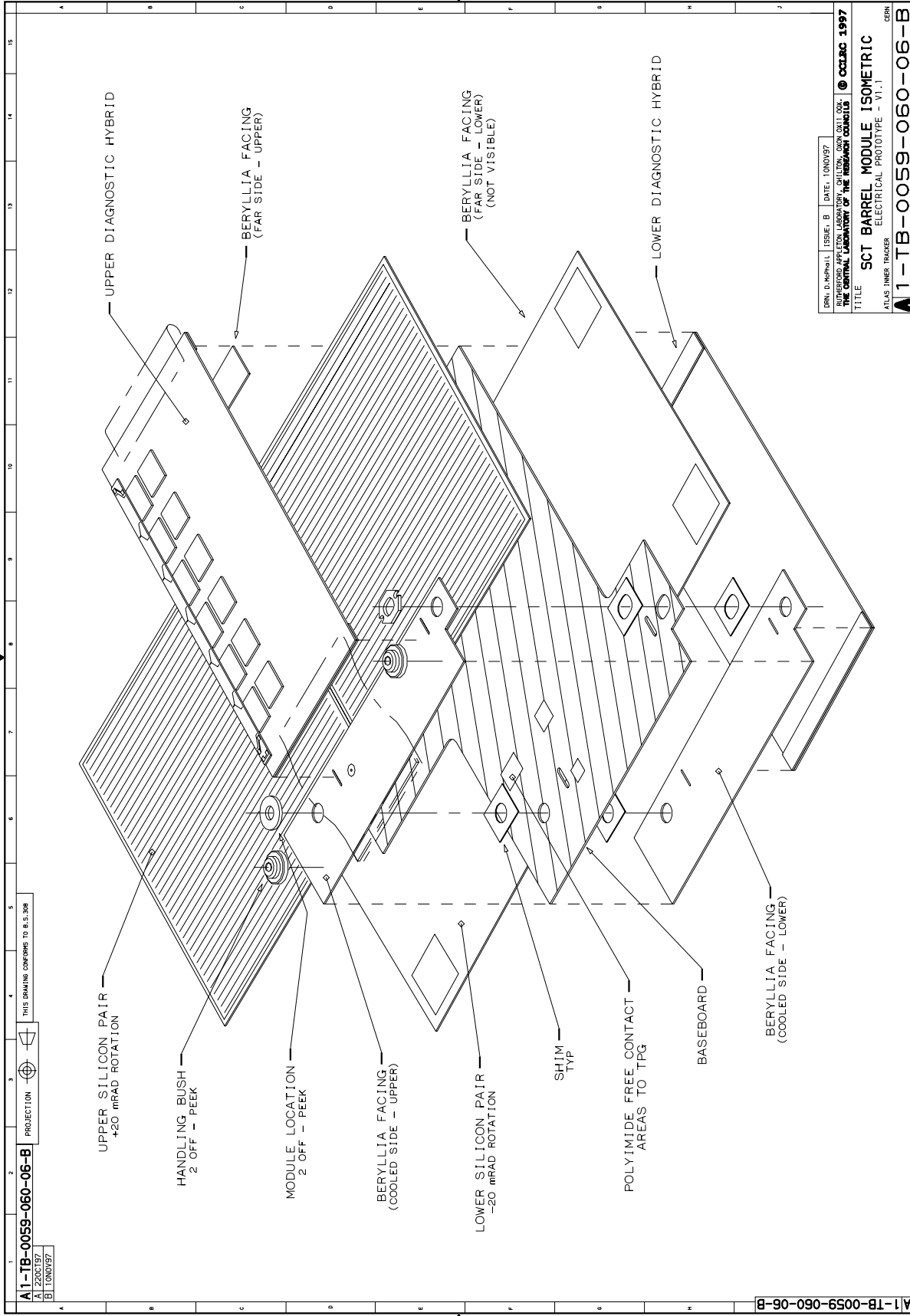
PROJECTION  
 THIS DRAWING CONFORMS TO B.S.308

DRN. D. MCPHERSON | ISSUE: B | DATE: 10NOV97  
 RUTHERFORD APPLIANCE LABORATORY, CHILTON, OXON OX11 0JX.  
 THE CENTRAL LABORATORY OF THE RESEARCH COUNCILS | © OCCASIO 1997  
 TITLE  
 SCT BARREL MODULE ISOMETRIC  
 ATLAS INNER TRACKER ELECTRICAL PROTOTYPE - V1.1  
 GERN  
 A1-TB-0059-060-05-B  
 SHEET 5 OF 6

ELECTRICAL PROTOTYPE - V1.1

A1-TB-0059-060-05-B

dwgnum 17104115.12-9807



A1-TB-0059-060-06-B  
 A1 22OCT97  
 B1 10NOV97

PROJECTION

THIS DRAWING CONFORMS TO B.S.308

DRN. D. McPHILL | ISSUE: B | DATE: 10NOV97  
 RUTHERFORD APPL. LAB. CHILTON, OXON OX11 0QX  
 THE CENTRAL LABORATORY OF THE RESISTANCE COUNCIL

© OCCAS 1997

TITLE  
 SCT BARREL MODULE ISOMETRIC

ATLAS INNER TRACKER ELECTRICAL PROTOTYPE - VI.1  
 CERN

A1-TB-0059-060-06-B  
 SHEET 6 OF 6

d:\m4\FK135TA\10\_43:33;25-SEP-97