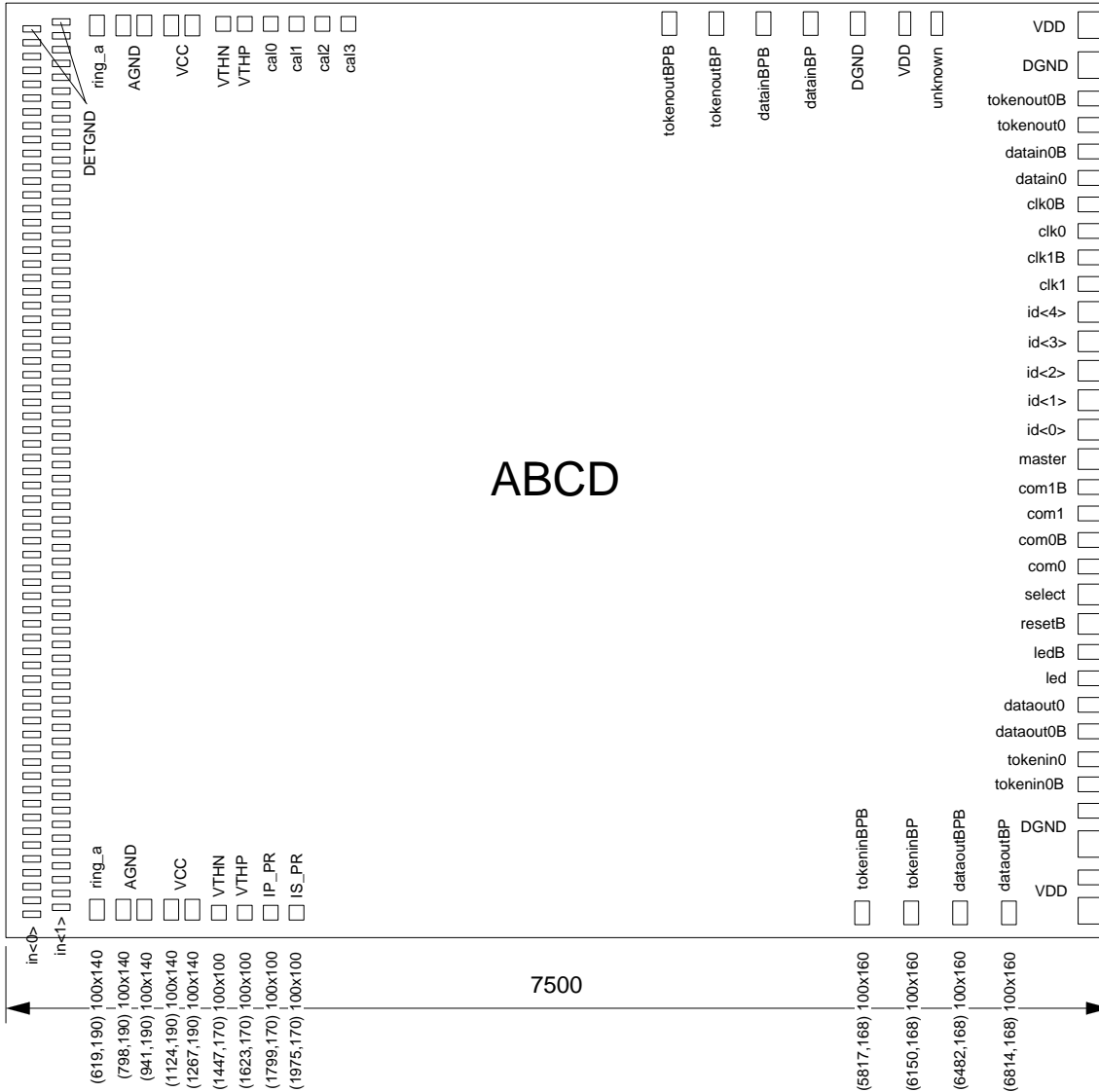


ISSUE DATE 98/12/16

6350

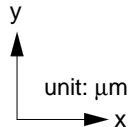
in<0> (175,159) 120x43: 65 x in<0> pitch 94
 in<1> (376,206) 120x43: 65 x in<1> pitch 94



Pad Centre(x,y) size (x x y)
unit: μm

- VDD (7364,6201) 160x180
- DGND (7364,5929) 160x180
- tokenout0B (7364,5702) 160x100
- tokenout0 (7364,5522) 160x100
- datain0B (7364,5342) 160x100
- datain0 (7364,5162) 160x100
- clk0B (7364,4982) 160x100
- clk0 (7364,4802) 160x100
- clk1B (7364,4622) 160x100
- clk1 (7364,4442) 160x100
- id<4> (7364,4252) 160x140
- id<3> (7364,4052) 160x140
- id<2> (7364,3852) 160x140
- id<1> (7364,3652) 160x140
- id<0> (7364,3452) 160x140
- master (7364,3252) 160x140
- com1B (7364,3062) 160x100
- com1 (7364,2882) 160x100
- com0B (7364,2702) 160x100
- com0 (7364,2522) 160x100
- select (7364,2332) 160x140
- resetB (7364,2132) 160x140
- ledB (7364,1942) 160x100
- led (7364,1762) 160x100
- dataout0 (7364,1582) 160x100
- dataout0B (7364,1402) 160x100
- tokenin0 (7364,1212) 160x100
- tokenin0B (7364,1042) 160x100
- DGND (7364,862) 160x100
- VDD (7364,636) 160x180
- VDD (7364,409) 160x100
- (7364,183) 160x180

Note: 98/12/16
 G6-G7 area pad coordinates are uncertain:
 tokenout BPB
 tokenout BP
 datainBPB
 datainBP
 DGND
 VDD
 unknown

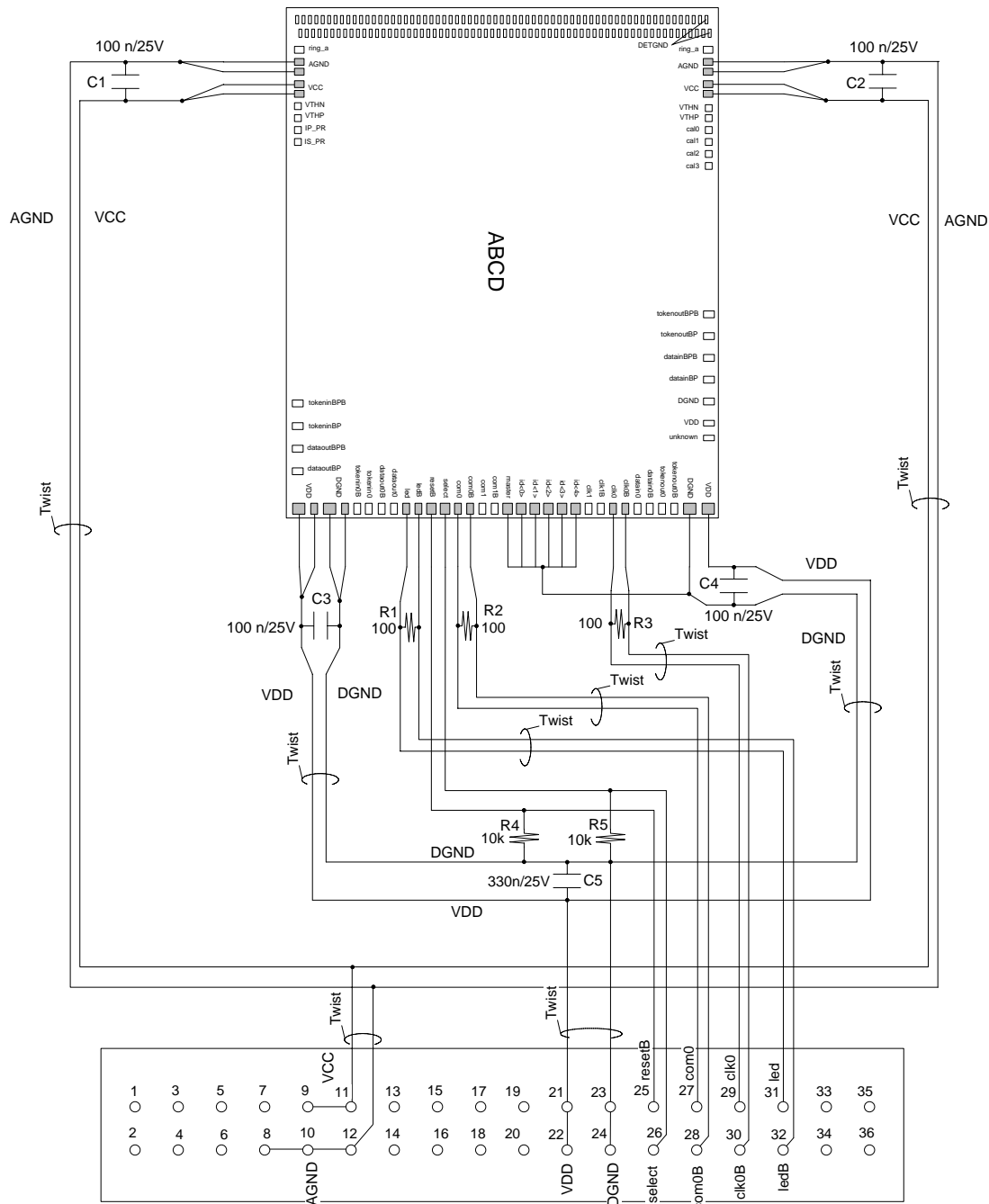
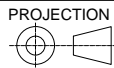


ABCD

7500

KEK INSTITUTE FOR PARTICLE AND NUCLEAR STUDIES
 HIGH ENERGY ACCELERATOR RESEARCH ORGANIZATION
 OHO 1-1, TSUKUBA, IBARAKI 305-0801, JAPAN

ITEM NO.	TITLE	MATERIAL	QUANTITY	REMARKS
DESIGNED	SCALE 20/1	TITLE	ABCD chip layout	
DRAWN Y. Unno	PAPER SIZE	DRAWING NO.	FE9812141705A	
CHECKED	A4			

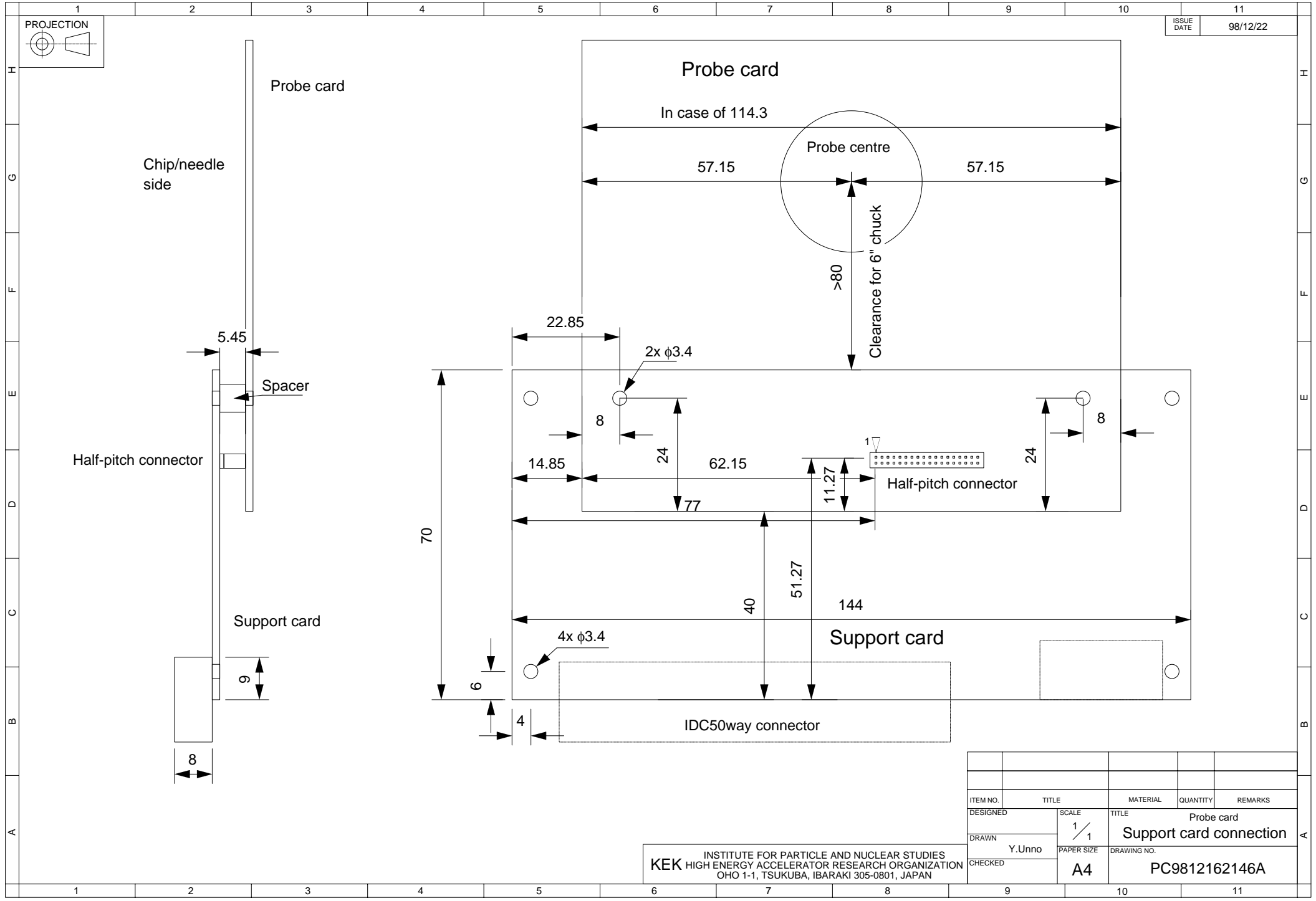
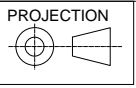


Half-pitch (1.27 mm) connector: e.g., Samtec SFMC-136-L3-S-D

Note: All R and C components are to be placed as close to the probes as possible

INSTITUTE FOR PARTICLE AND NUCLEAR STUDIES
 KEK HIGH ENERGY ACCELERATOR RESEARCH ORGANIZATION
 OHO 1-1, TSUKUBA, IBARAKI 305-0801, JAPAN

ITEM NO.	TITLE	MATERIAL	QUANTITY	REMARKS
DESIGNED	SCALE 5/1	TITLE ABCD probe card Line connection		
DRAWN Y.Unno	PAPER SIZE A4	DRAWING NO. PC9812161400A		
CHECKED				



ITEM NO.	TITLE	MATERIAL	QUANTITY	REMARKS
DESIGNED	SCALE 1/1	TITLE	Probe card	
DRAWN Y.Unno	PAPER SIZE	Support card connection		
CHECKED	A4	DRAWING NO. PC9812162146A		

KEK INSTITUTE FOR PARTICLE AND NUCLEAR STUDIES
 HIGH ENERGY ACCELERATOR RESEARCH ORGANIZATION
 OHO 1-1, TSUKUBA, IBARAKI 305-0801, JAPAN