

.050" HIGH REL SOCKET SFMC SERIES

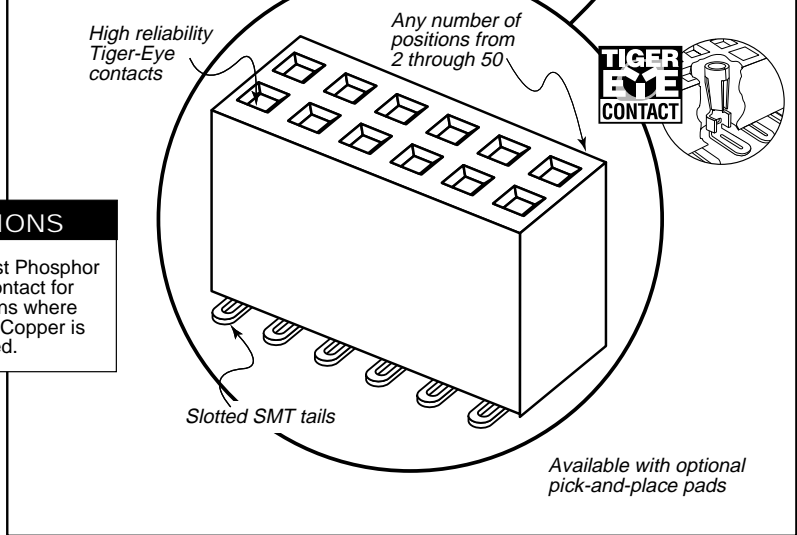
SPECIFICATIONS

Materials:
Insulator Material: Black Liquid Crystal Polymer
Contact Material: Tiger Eye= BeCu
 Tiger Eye LITE= Phosphor Bronze
Current Rating: 2A @ 80°C ambient
Operating Temp Range: -65°C to +125°C
Plating: Au over 50µ" (1,27µm) Ni
Contact Resistance: 15 mΩ max
Insertion Depth: (3,05mm) .120" to (4,06mm) .160"
Insertion Force: Standard= 5.0oz (1,39N) avg; LITE= 4.0oz (1,11N) avg; LIF= 2.0oz (0,56N) avg.
Normal Force: Standard= 70g (0,69N) avg; LIF= 40g (0,39N) avg.
Withdrawal Force: Standard= 4.0oz (1,11N) avg; LITE= 2.5oz (0,69N) avg; LIF= 1.5oz (0,42N) avg.
Max Cycles: Tiger Eye= 100 with 10µ" (0,25µm) Au

Mates with: TFM, FTSH(LIF), FW(LIF)

APPLICATIONS

Lower cost Phosphor Bronze contact for applications where Beryllium Copper is not needed.



Note: Some sizes, styles and options are non-standard, non-returnable.

SFMC - 1 NO. PINS PER ROW - LEAD STYLE - PLATING OPTION - D - OPTION

02 thru 50

-S = 30µ" (0,76µm) Au contact 150µ" (3,81µm) Tin tail

-K (Best Cost Option) = (4,00mm) .157 DIA Polyamide film Pick & Place Pad (4 positions minimum)

-P = Plastic Pick & Place Pad (5 positions minimum)

-TR = Tape & Reel

LEAD STYLE	A	B
-01, -L1, -T1	(3,05) .120	(0,51) .020
-03, -L3	(1,91) .075	(0,41) .016

-01, -03 = Through-hole

-L1, -L3 = Low Insertion Force Through-hole

-02 = Surface Mount

-L2 = Low Insertion Force Surface Mount

-T1 = Through-hole Tiger Eye LITE

-T2 = Surface Mount Tiger Eye LITE

(1,27) .050 x No. of Positions + (0,20) .008

(3,05) .120

(1,27) .050 TYP

(1,27) .050 TYP

(4,57) .180

(0,51) .020

A (0,13) .005 TYP

(4,19) .165 (0,13) .005 TYP

(0,58) .023

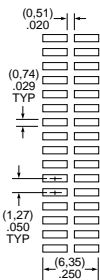
(1,27) .050

(10,00 x 5,72) .394 x .225

-P OPTION

Processing:

Max Processing Temp: 230°C for 60 seconds
SMT Lead Coplanarity: (0,10mm) .004" max (02-26) (0,15mm) .006" max (27-50)
Suggested PCB Layouts: Your specific layout may vary



UNLESS OTHERWISE NOTED TOLERANCES ARE: ONE PLACE DECIMALS ± .1 THREE PLACE DECIMALS ± .005 ANGLES ± 2° TWO PLACE DECIMALS ± .01 FOUR PLACE DECIMALS ± .0020

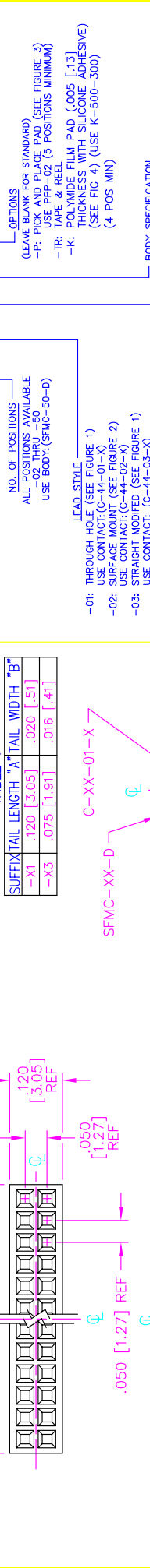


FIG. 1 THROUGH HOLE

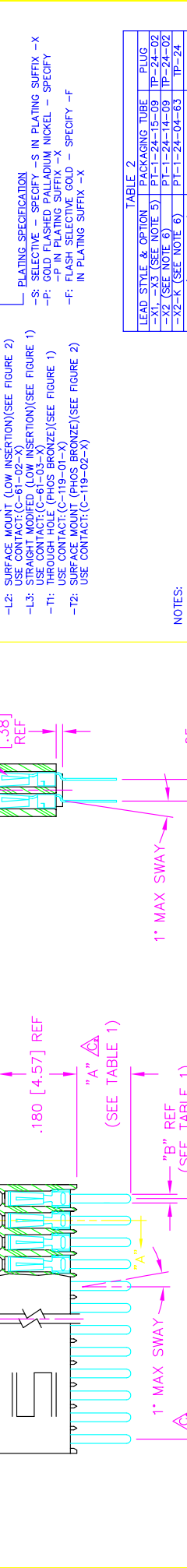


FIG. 2 SURFACE MOUNT DIFFERENT AS SHOWN, OTHERWISE SAME AS FIG. 1.

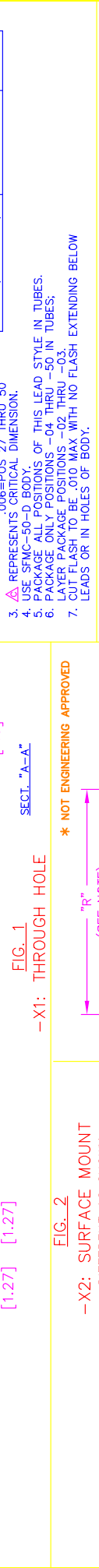


FIG. 3 5 POSITION MINIMUM -P OPTION (PAD TO BE POSITIONED AS SHOWN)

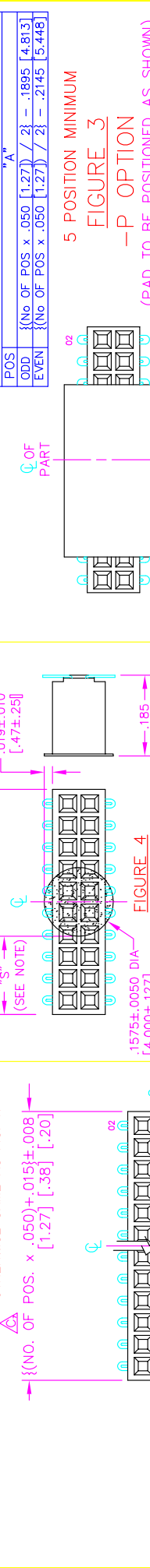


FIG. 4 POLYIMIDE FILM PAD (4 POS MIN)



FIG. 5 THROUGH HOLE

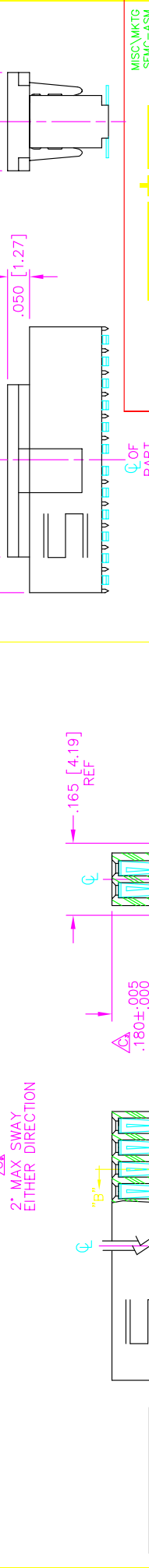


FIG. 6 SURFACE MOUNT

TABLE 1

SUFFIXIAL LENGTH "A" TAIL WIDTH "B"	NO. OF POSITIONS ALL POSITIONS AVAILABLE
-X1	.120 [3.05] .020 [.51]
-X3	.075 [1.91] .016 [.41]

TABLE 2

LEAD STYLE & OPTION	PACKAGING TUBE	BLUG
-X1	PT-1-24-15-09	TP-24-02
-X2	PT-1-24-14-09	TP-24-02
-X2-K	PT-1-24-04-83	TP-24
-X2-P	PT-1-24-01-38	TP-03
-X1-K	PT-1-24-05-15	TP-24

TABLE 3

POS	"A"
ODD	{(No OF POS x .050 [1.27]) / 2} - .1895 [4.813]
EVEN	{(No OF POS x .050 [1.27]) / 2} - .2145 [5.448]

NOTES: 1. MIN. PUSHOUT FORCE: .5 lb. .004=POS 02 THRU 26 .006=POS 27 THRU 50 2. COPLANARITY: .006=POS 27 THRU 50 3. Δ REPRESENTS CRITICAL DIMENSION. 4. USE SFCM-50-D BODY. 5. PACKAGE ALL POSITIONS IN TUBES. 6. PACKAGE ONLY POSITIONS -04 THRU -50 IN TUBES. 7. CUT FLASH TO BE .010 MAX WITH NO FLASH EXTENDING BELOW LEADS OR IN HOLES OF BODY.

* NOT ENGINEERING APPROVED

PROPRIETARY NOTE THIS DOCUMENT CONTAINS INFORMATION CONFIDENTIAL AND PROPRIETARY TO SAMTEC INC. ANY REPRODUCTION OR TRANSMISSION OF THIS DOCUMENT OR DISCLOSURE TO OTHER THAN THAT FOR WHICH IT WAS WRITTEN WITHOUT THE WRITTEN CONSENT OF SAMTEC INC.

MISC.WKMG SFCM-ASM

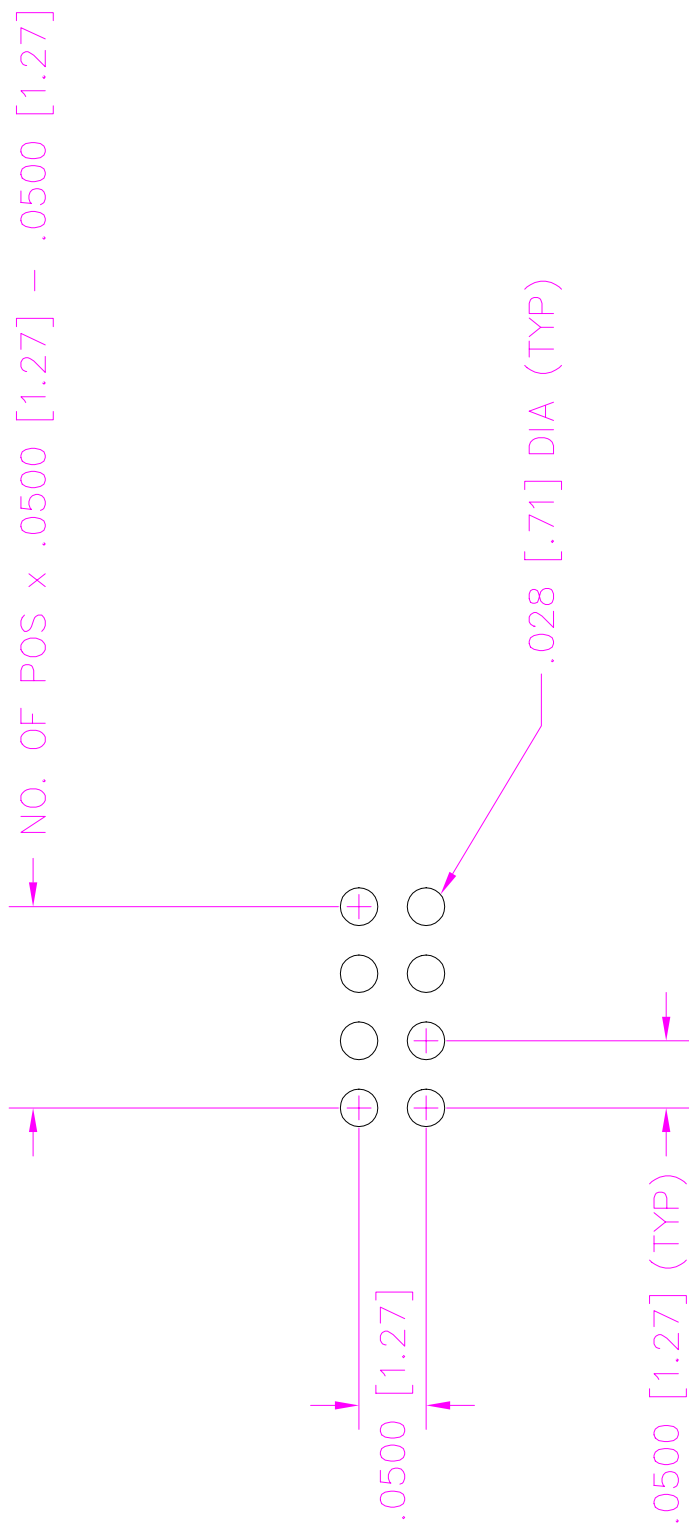
520 PARK EAST BLVD. NEW ALBANY, INDIANA 47150
PHONE (812) 944-6733 P.O. BOX 1147
CODE 55322

MADE BY: BRATCHER 10-5-94
CHECKED BY:

PLOT SCALE 1= .175

RECOMMENDED P.C. BOARD LAYOUT FOR SFMC THRU HOLE (DOUBLE)

REV. A



MISC\MKTG\FOOTPRINT
SFMCTHD



810 PROGRESS BLVD. NEW ALBANY, INDIANA 47150
PHONE (812) 944-6733 P.O. BOX 1147

PLOT SCALE: 1 = .1